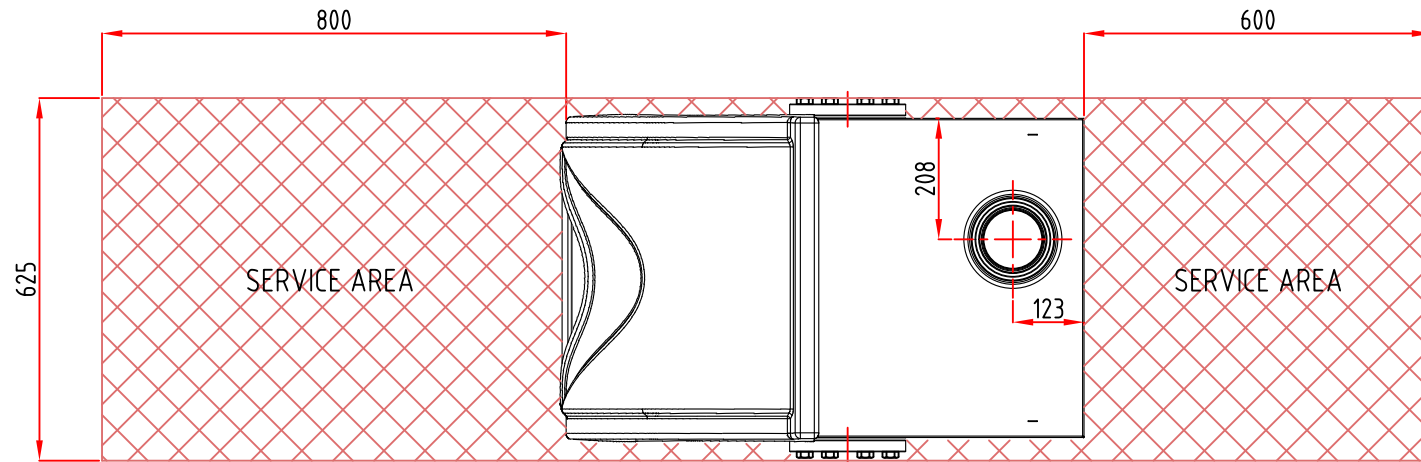
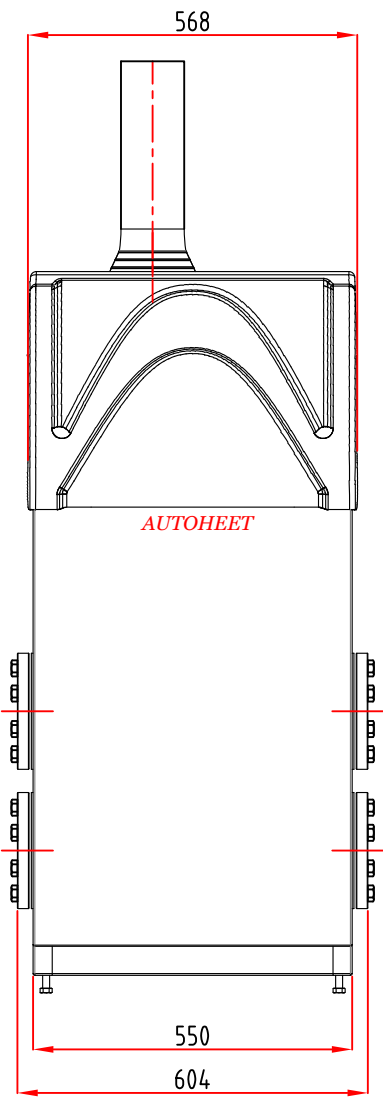


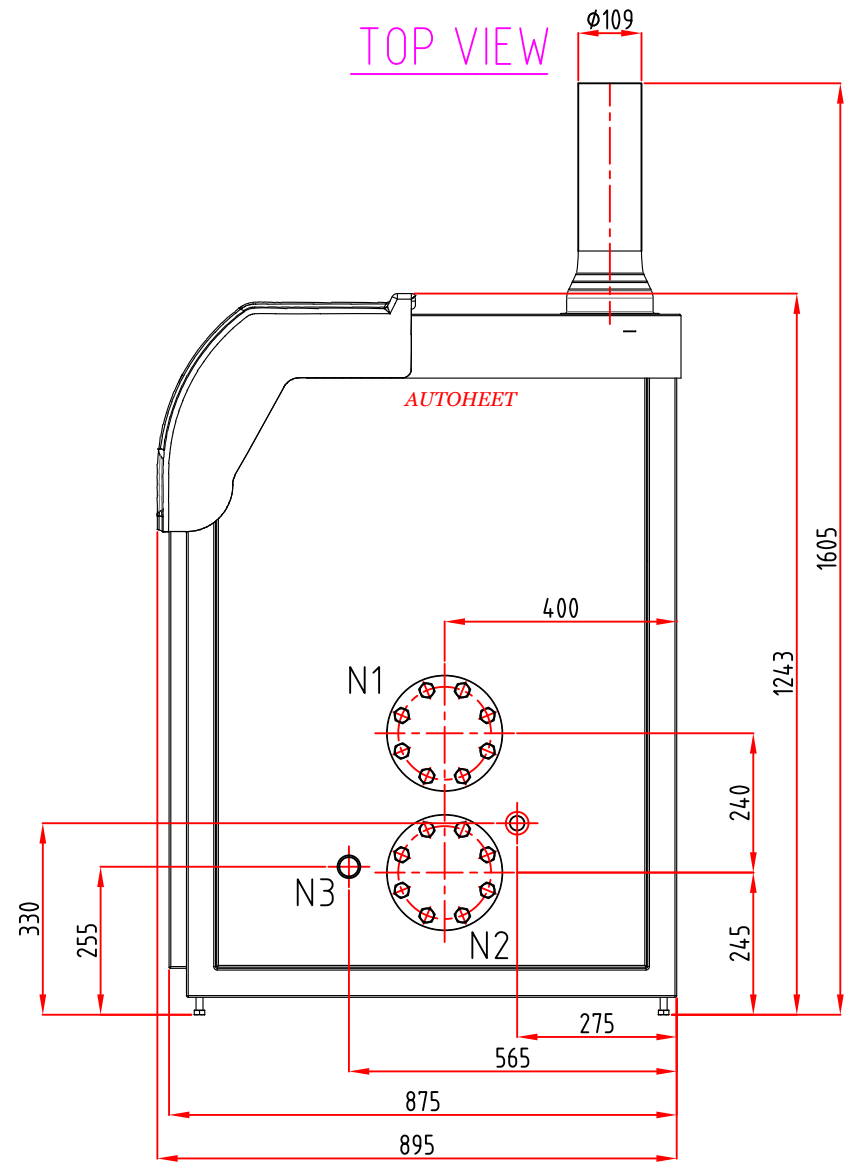
DIMENSIONS ARE CORRECT AT TIME OF PRINTING AND MAY ALTER WITHOUT PRIOR NOTIFICATION



TOP VIEW



FRONT VIEW



SIDE VIEW

| NOZZLE | SIZE | DESCRIPTION |
|--------|------------|------------------|
| N1 | 80mm DIN16 | HHW OUTLET/FLOW |
| N2 | 80mm DIN16 | HHW INLET/RETURN |
| N3 | 40BSPM | GAS |

| | | | | | | | | | | |
|---------------------------|------|----------|-----|-----------------|---|---|--|--------|----------------|------|
| | | | | NAME: P. SIGUIN | CLIENT: | AUTOMATIC HEATING PTY LTD | | SIZE | DRG No. | REV. |
| TABLE DESCRIPTION REVISED | G.R. | 02/11/15 | B | DATE: 11/09/17 | | 67 GATEWAY BOULEVARD | | A3 | MER-120-150-OD | B |
| ORIGINAL ISSUE | G.R. | 02/10/15 | A | APP: | TITLE: | EPPING, VICTORIA 3076 AUSTRALIA | | | | |
| MODIFICATION | NAME | DATE | REV | QUOTE No. | MERIDIAN CONDENSING BOILER OUTDOOR MODEL-120/150 | Phone : +61 3 9330 3300 Fax : +61 3 9310 5655 | | SCALE: | 1 : 10 | |